



Indoor/outdoor living at it's best

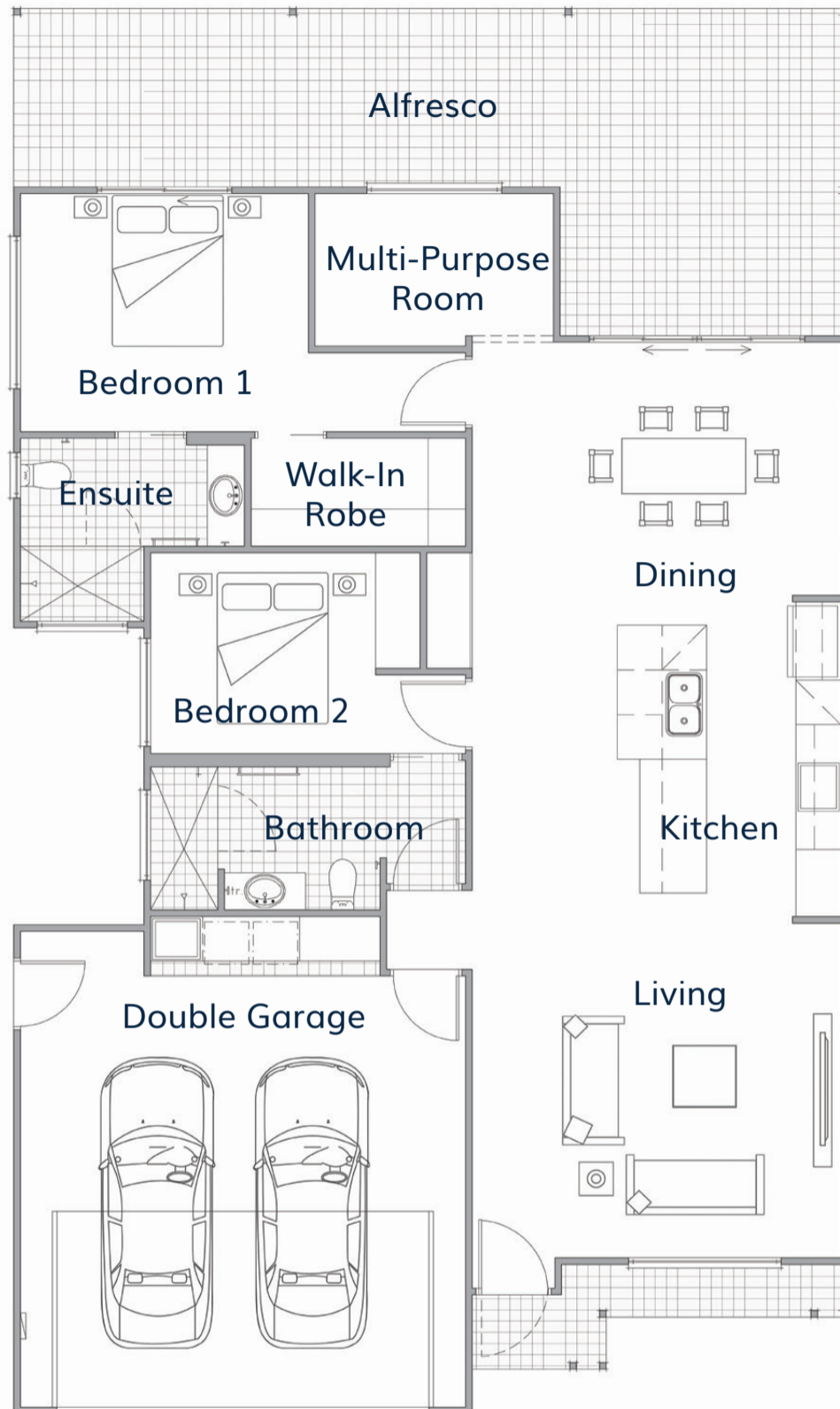
The Watonga features a stylish modern kitchen at the centre of the home with open plan living creating a welcoming space with access to the extensive private back alfresco – perfect to enjoy the best of Goolwa's weather. Retreat to the master bedroom featuring an ensuite and walk-in robe, hosts family in the guest bedroom, and enjoy the additional space of the multi-purpose room.

- Modern kitchen
- Open plan living and dining
- Master with WIR and ensuite
- Guest bedroom and multi-purpose room
- Extensive private alfresco



Watonga

(Rear Alfresco)



Living	4.9m x 5.0m	Walk-In Robe	1.5m x 2.9m
Dining	3.8m x 5.0m	Ensuite	2.5m x 3.0m
Kitchen	3.0m x 4.4m	Bedroom 2	2.7m x 4.2m
Multi-Purpose Room	2.1m x 3.2m	Bathroom	2.0m x 4.2m
Alfresco	4.4m x 11.2m	Double Garage	6.0m x 6.6m
Bedroom 1	3.2m x 6.0m	Total Area	199.38m²



*The facade renders and floorplans are provided for illustrative purposes only. It may contain upgraded items/finishes not included as standard. For detailed home pricing, please talk to a sales consultant. All efforts have been made to ensure accuracy of this brochure at time of print.

A new way of living.

HOMETOWN AUSTRALIA
COMMUNITIES