



**SEACHANGE**

GOOLWA

# Seabreeze



2



1



2



2

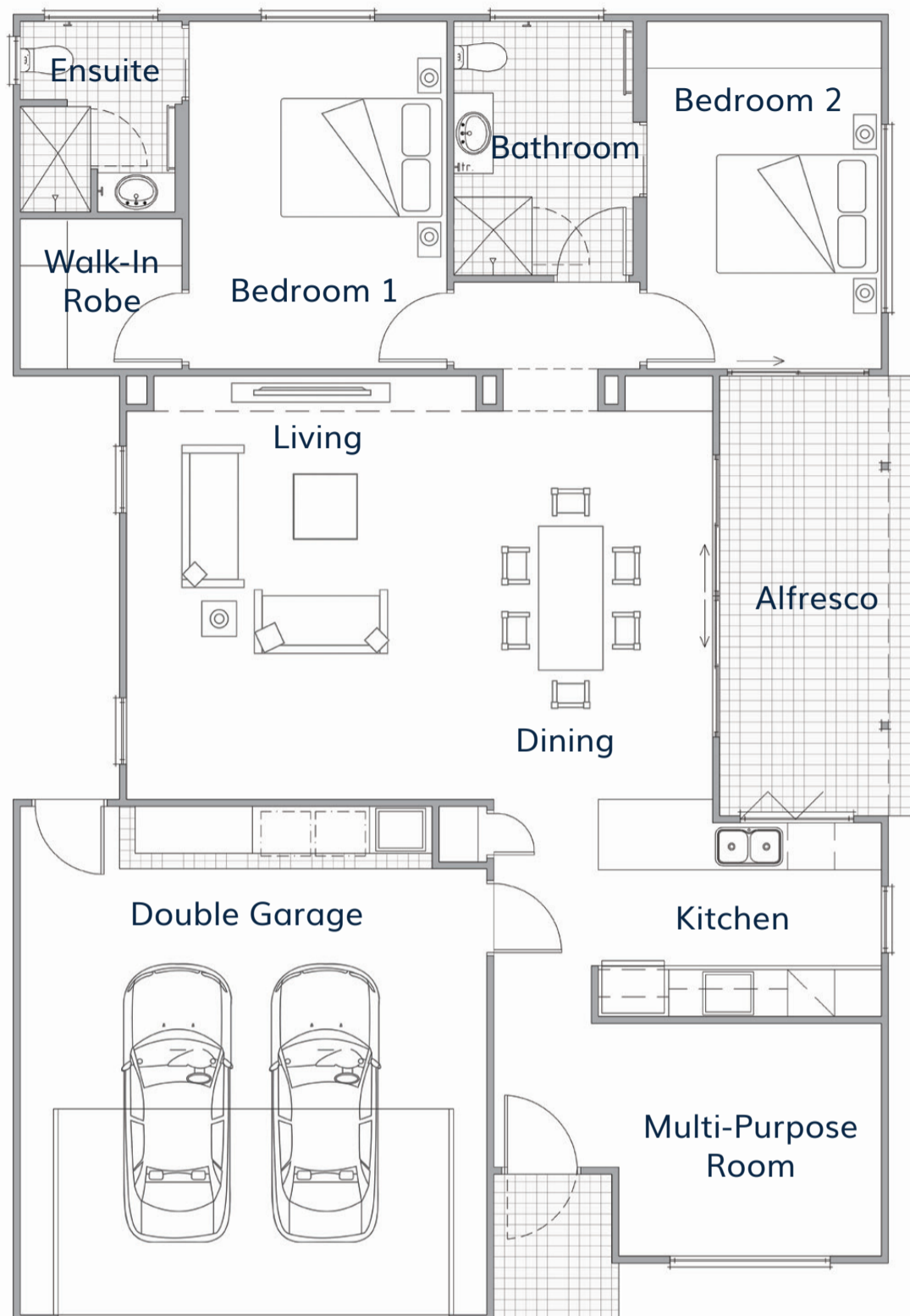
## Flexible living at it's finest

Seabreeze is a stylish design offering sundrenched open plan living and dining flowing onto side covered alfresco. After a long day, step into your master bedroom with a walk-in robe and ensuite. Enjoy flexible living with a guest bedroom, second bathroom, multi-purpose room, laundry, and secure double car garage.

- Modern kitchen
- Open plan living and dining
- Master with WIR and ensuite
- Guest bedroom
- Second bathroom



# Seabreeze



Living	3.8m x 5.4m	Walk-In Robe	1.9m x 2.1m
Dining	3.8m x 5.4m	Ensuite	2.1m x 2.4m
Kitchen	2.8m x 4.9m	Bedroom 2	3.0m x 4.5m
Multi-Purpose Room	3.0m x 3.4m	Bathroom	2.3m x 3.3m
Alfresco	2.6m x 5.6m	Double Garage	6.0m x 6.5m
Bedroom 1	3.3m x 4.5m	<b>Total Area</b>	<b>180.05m<sup>2</sup></b>



\*The facade renders and floorplans are provided for illustrative purposes only. It may contain upgraded items/finishes not included as standard. For detailed home pricing, please talk to a sales consultant. All efforts have been made to ensure accuracy of this brochure at time of print.

A new way of living.

**HOMETOWN AUSTRALIA**  
COMMUNITIES