



SEACHANGE

GOOLWA

Avalon



Artist's impression. Neighbouring homes not shown.



2



1



2



2

Welcome home to Avalon

The Avalon has a welcoming atmosphere with a modern kitchen and open living and dining areas flowing onto the large outdoor alfresco. Enjoy a luxurious master bedroom with ensuite and a large walk-in robe, guest bedroom with separate bathroom, and a multi-purpose room. Enjoy the convenience with a double garage, separate laundry, and low maintenance gardens.

- Modern kitchen
- Open plan living and dining
- Master with WIR and ensuite
- Guest bedroom
- Second bathroom

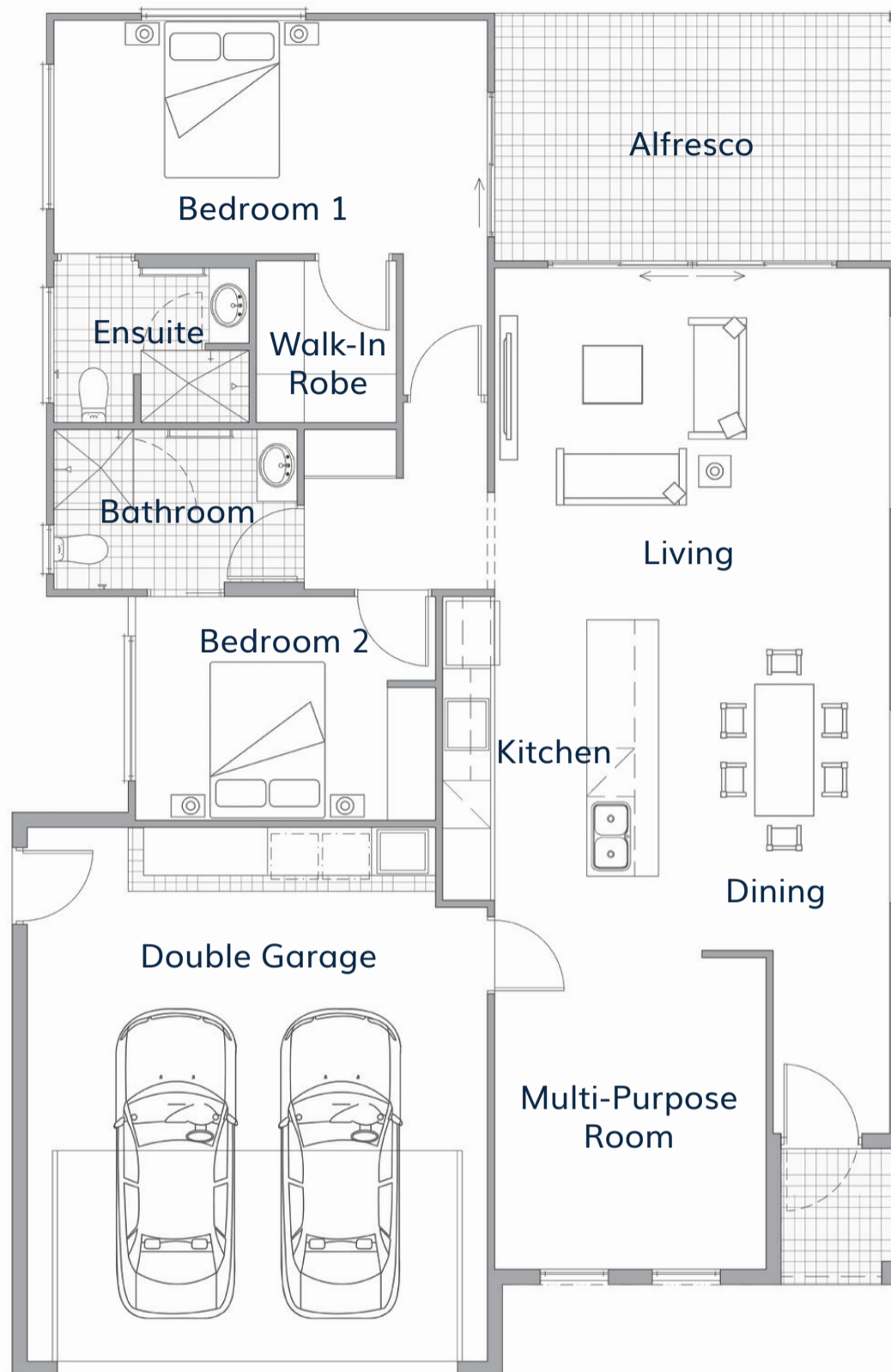


Artist's impression



Artist's impression

Avalon



Living	4.4m x 4.9m	Walk-In Robe	1.8m x 2.0m
Dining	2.9m x 4.1m	Ensuite	2.0m x 2.4m
Kitchen	2.7m x 3.8m	Bedroom 2	2.8m x 3.8m
Multi-Purpose Room	3.9m x 3.4m	Bathroom	2.0m x 3.0m
Alfresco	3.1m x 5.0m	Double Garage	5.8m x 6.7m
Bedroom 1	4.7m x 5.4m	Total Area	175.80m²



*The facade renders and floorplans are provided for illustrative purposes only. It may contain upgraded items/finishes not included as standard. For detailed home pricing, please talk to a sales consultant. All efforts have been made to ensure accuracy of this brochure at time of print.

A new way of living.

HOMETOWN AUSTRALIA
COMMUNITIES