



SALTWOOD

LAKE MUNMORAH

Tea Tree



Artist's impression



2



1



1.5



2

Crafted for effortless living, the Tea Tree embodies comfort and ease. At its heart, this thoughtfully appointed home has a bright open plan kitchen, dining, and living space with raked ceilings flowing seamlessly onto the outdoor deck. Complementing the design is a welcoming guest bedroom and versatile multi-purpose along with serene master suite with walk in robe and separate bathroom. A double garage, laundry with powder room, and low maintenance landscaping creates a home for effortless living.

The Tea Tree Features

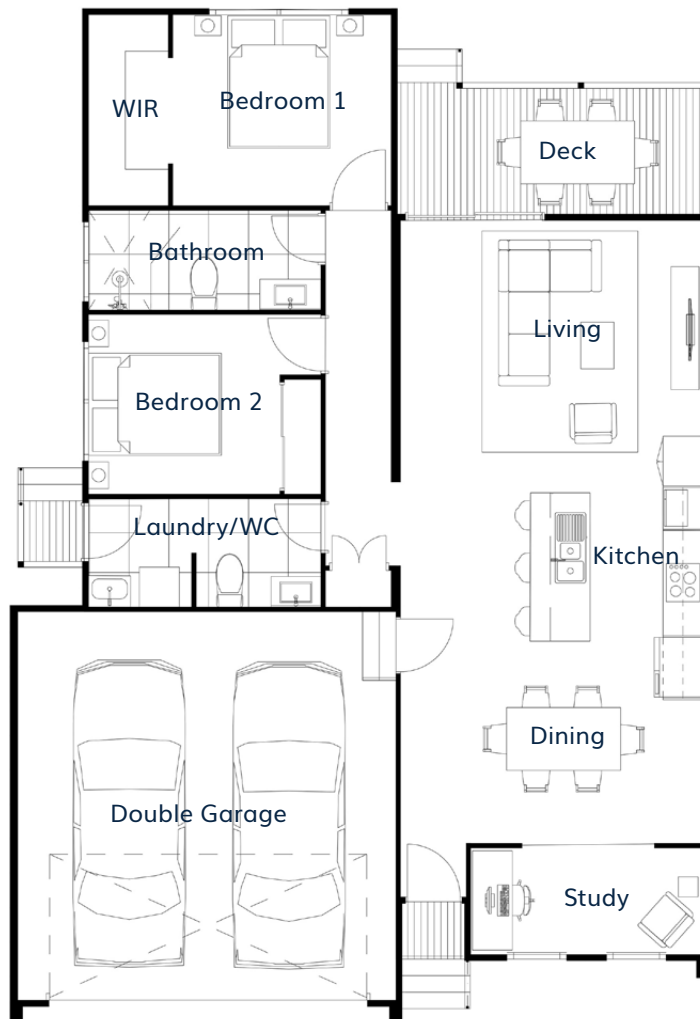
- Modern kitchen
- Open plan living
- Master w/ BIR
- Guest bedroom
- Double garage



Artist's impression



Tea Tree



Living Room	4.5m x 3.2m	Laundry/WC	3.5m x 1.6m
Dining Room	4.5m x 2.1m	Bathroom	3.5m x 1.5m
Kitchen	4.5m x 4.2m	WIR	1.2m x 2.8m
Bedroom 1	3.2m x 2.8m	Deck	4.5m x 2.2m
Bedroom 2	3.5m x 2.7m	Double Garage	5.6m x 5.8m
Study	3.5m x 1.6m	Total Area	139.2m²



The façade renders and floorplans are provided for illustrative purposes only. It may contain upgraded items/finishes not included as standard. For detailed home pricing, please talk to a sales consultant. All efforts have been made to ensure accuracy of this brochure at time of print.

A new way of living.

HOMETOWN AUSTRALIA
COMMUNITIES