



SALTWOOD

LAKE MUNMORAH

Palms



Artist's impression



2



1



2



2

Designed for effortless entertaining, the Palms invites you to host with ease in its spacious kitchen appointed with quality appliances, overlooking bright open plan living and dining spaces enhanced by beautiful, raked ceilings. Enjoy alfresco dining on the outdoor deck, while guests unwind in the comfortable guest bedroom with separate bathroom. Retreat to your elegant master suite complete with built in robe and ensuite for ultimate comfort.

The Palms Features

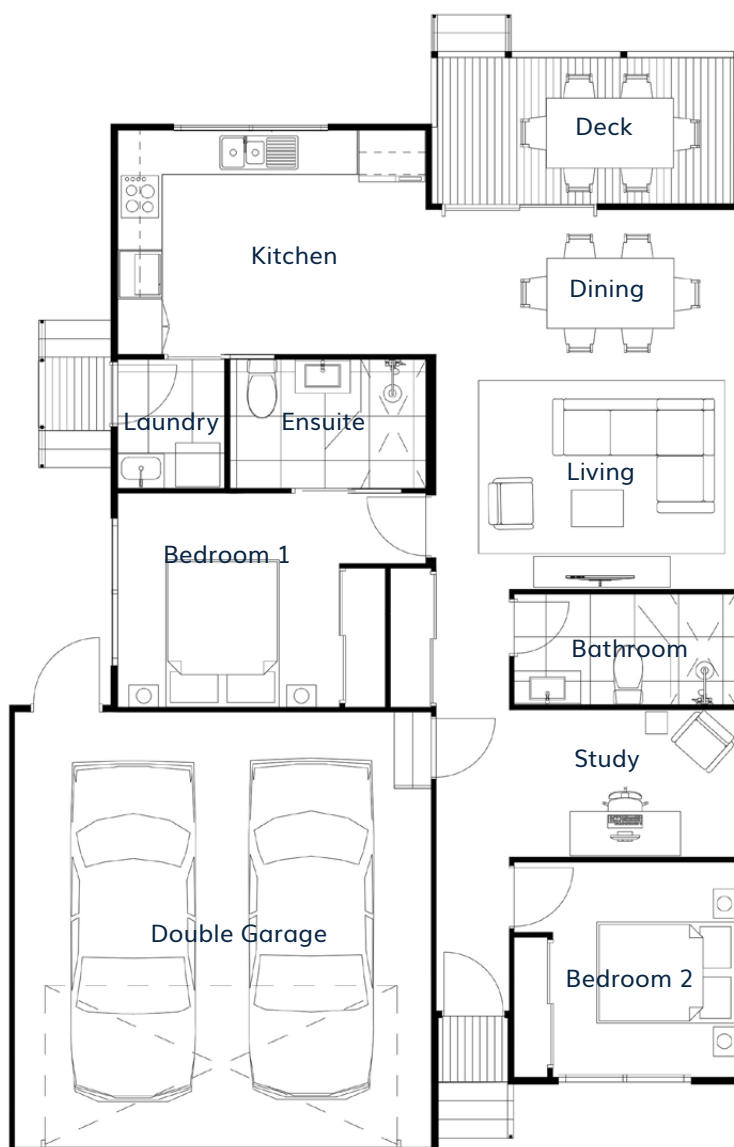
- Spacious kitchen
- Open plan living
- Master with BIR and ensuite
- Guest bedroom with BIR
- Double garage



Artist's impression



Palms



Living Room	4.2m x 2.6m	Laundry	1.4m x 1.7m
Dining Room	4.2m x 2.4m	Bathroom	3.0m x 1.5m
Kitchen	4.1m x 3.0m	Ensuite	2.6m x 1.7m
Bedroom 1	4.1m x 2.8m	Deck	4.2m x 2.1m
Bedroom 2	3.0m x 3.0m	Double Garage	5.6m x 5.9m
Study	3.0m x 2.0m	Total Area	127.18m²



The façade renders and floorplans are provided for illustrative purposes only. It may contain upgraded items/finishes not included as standard. For detailed home pricing, please talk to a sales consultant. All efforts have been made to ensure accuracy of this brochure at time of print.

A new way of living.

HOMETOWN AUSTRALIA
COMMUNITIES