



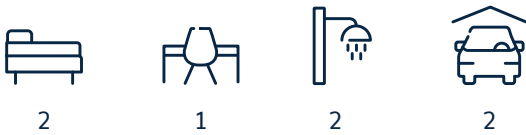
SALTWOOD

LAKE MUNMORAH

Birdie



Artist's impression



The Birdie is a beautifully refined retreat designed for effortless living. Begin each day in the modern kitchen overlooking the sunlit living and dining spaces, then unwind on the entertainer's deck for a moment of calm. The private master features a walk-through robe into the elegant ensuite and complemented by a welcoming guest bedroom with separate bathroom. With a versatile multi-purpose room, double garage, laundry, and low-maintenance landscaping – the Birdie creates a lifestyle of ease and sophistication.

The Birdie Features

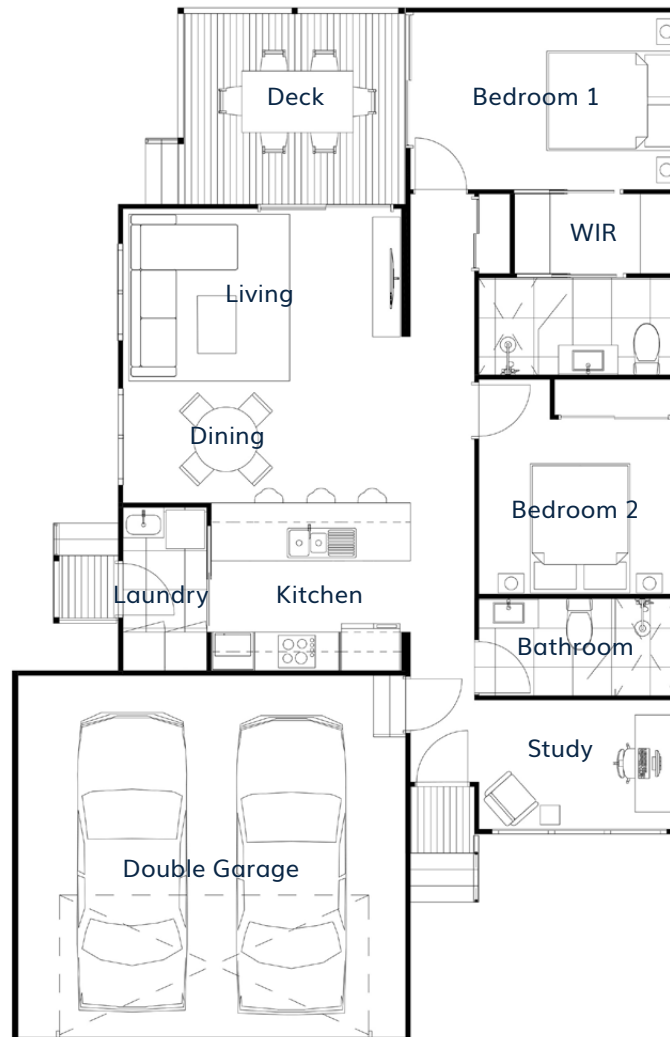
- Spacious kitchen
- Open plan living
- Elegant master suite
- Guest bedroom
- Double garage



Artist's impression



Birdie



Living Room	4.3m x 2.5m	Laundry	1.3m x 2.6m
Dining Room	4.3m x 2.0m	Bathroom	3.1m x 1.5m
Kitchen	3.0m x 2.6m	WIR	2.5m x 1.2m
Bedroom 1	4.1m x 2.7m	Deck	3.5m x 2.9m
Bedroom 2	3.5m x 3.8m	Double Garage	6.0m x 5.6m
Study	3.1m x 2.0m	Total Area	132.65m²



The façade renders and floorplans are provided for illustrative purposes only. It may contain upgraded items/finishes not included as standard. For detailed home pricing, please talk to a sales consultant. All efforts have been made to ensure accuracy of this brochure at time of print.

A new way of living.

HOMETOWN AUSTRALIA
COMMUNITIES