



Artist's impression. Neighbouring houses not shown



Entertaining made easy

The perfect home for those looking for spacious, low maintenance living. The impressive kitchen has a walk-in pantry and breakfast bar overlooking the living and dining areas opening onto the large alfresco – perfect for entertaining. Step into the master with walk-in robe and ensuite. Enjoy flexible living with a guest bedroom, second bathroom, study, and secure double car garage.

- Modern kitchen with walk-in pantry
- Master with WIR and ensuite
- Guest bedroom and study
- Outdoor covered alfresco
- Double garage

Artist's render - Clubhouse

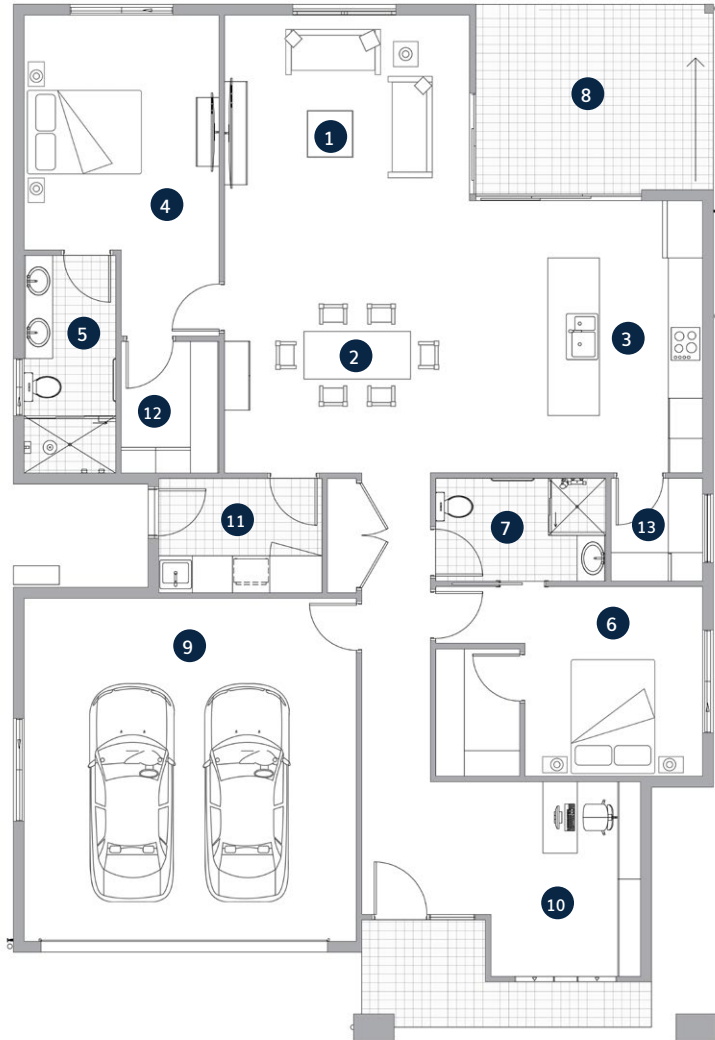


Artist's render - Pool



Wild Sage

- 1 Living
- 2 Dining
- 3 Kitchen
- 4 Bedroom 1
- 5 Ensuite
- 6 Bedroom 2
- 7 Bathroom
- 8 Alfresco
- 9 Double Garage
- 10 Multi-Purpose Room
- 11 Laundry
- 12 Walk-In Robe
- 13 Walk-In Pantry



Living	4.3m x 4.0m
Dining	4.0m x 4.0m
Kitchen	4.1m x 4.8m
Bedroom 1	3.4m x 8.0m
Ensuite	1.6m x 3.8m
Walk-In Robe	1.7m x 2.3m

Bedroom 2	3.1m x 3.3m
Bathroom	1.8m x 3.0m
Alfresco	4.1m x 3.2m
Double Garage	6.0m x 5.8m
Multi-Purpose Room	2.6m x 3.4m
Total Area	219.8m²



*The facade renders and floorplans are provided for illustrative purposes only. It may contain upgraded items/finishes not included as standard. For detailed home pricing, please talk to a sales consultant. All efforts have been made to ensure accuracy of this brochure at time of print.

A new way of living.

HOMETOWN AUSTRALIA
COMMUNITIES