



Artist's impression. Neighbouring houses not shown



Embrace a 'lock and leave' lifestyle

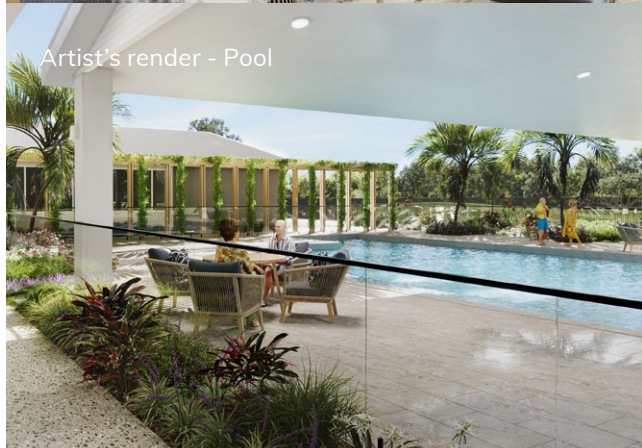
The Paperbark is the perfect design for those looking for a low maintenance home that can offer a lock and leave lifestyle. Enjoy a stylish design offering sundrenched open plan kitchen, living and dining onto the outdoor alfresco. Step into your master bedroom with a walk-in robe and ensuite. Flexible living with a guest bedroom, second bathroom, study, laundry, and secure double car garage.

- Modern kitchen
- Master with WIR and ensuite
- Guest bedroom and study
- Outdoor covered alfresco
- Double garage

Artist's render - Clubhouse

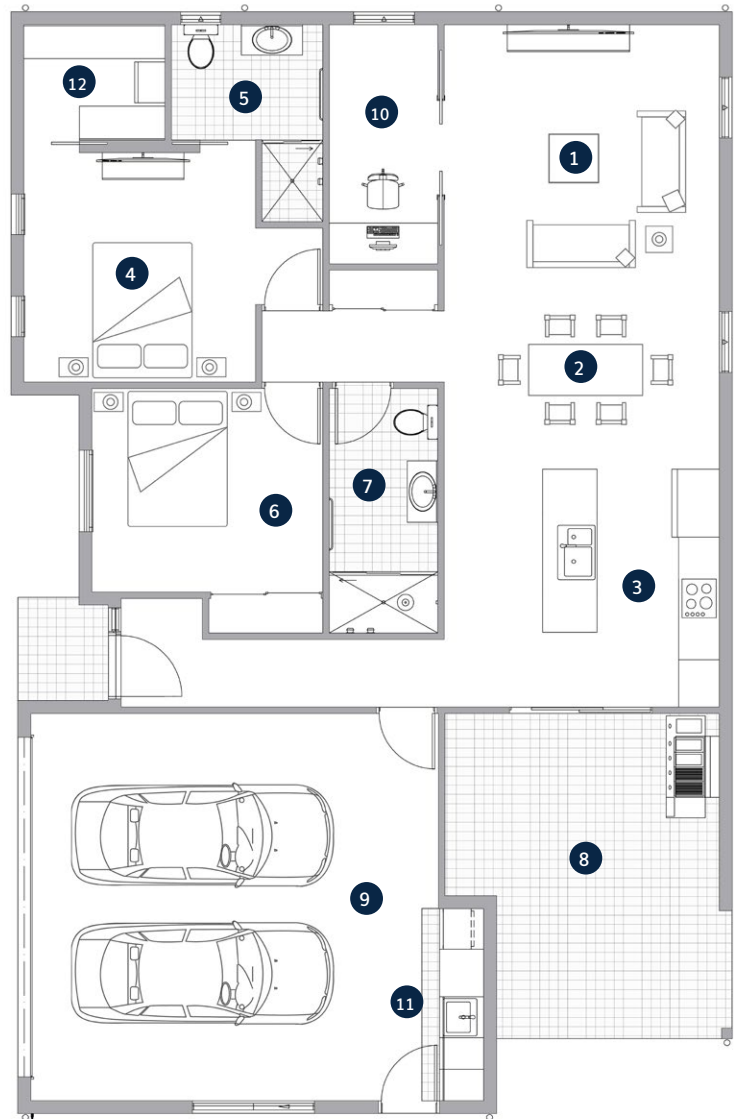


Artist's render - Pool



Paperbark

- 1 Living
- 2 Dining
- 3 Kitchen
- 4 Bedroom 1
- 5 Ensuite
- 6 Bedroom 2
- 7 Bathroom
- 8 Alfresco
- 9 Double Garage
- 10 Multi-Purpose Room
- 11 Laundry
- 12 Walk-In Robe



Living	4.1m x 3.3m
Dining	4.1m x 3.3m
Kitchen	2.6m x 3.5m
Bedroom 1	3.5m x 4.4m
Ensuite	1.7m x 2.2m
Walk-In Robe	1.7m x 2.1m

Bedroom 2	3.0m x 3.4m
Bathroom	1.6m x 3.6m
Alfresco	4.0m x 4.8m
Double Garage	5.7m x 6.0m
Multi-Purpose Room	1.6m x 3.5m
Total Area	171.7m²



*The facade renders and floorplans are provided for illustrative purposes only. It may contain upgraded items/finishes not included as standard. For detailed home pricing, please talk to a sales consultant. All efforts have been made to ensure accuracy of this brochure at time of print.

A new way of living.

HOMETOWN AUSTRALIA
COMMUNITIES