



Artist's impression. Neighbouring houses not shown



Modern design with contemporary luxuries

Casuarina is a modern design offering contemporary luxuries. The design focusses on harnessing the natural light featuring a modern kitchen and open plan living and dining with doors extending onto the outdoor deck. Retreat to the master suite complete with a stunning walk-through wardrobe into the modern ensuite. Enjoy having space to host guests with a guest bedroom and second bathroom.

- Spacious modern kitchen
- Master with WIR and ensuite
- Guest bedroom
- Outdoor covered alfresco
- Double garage



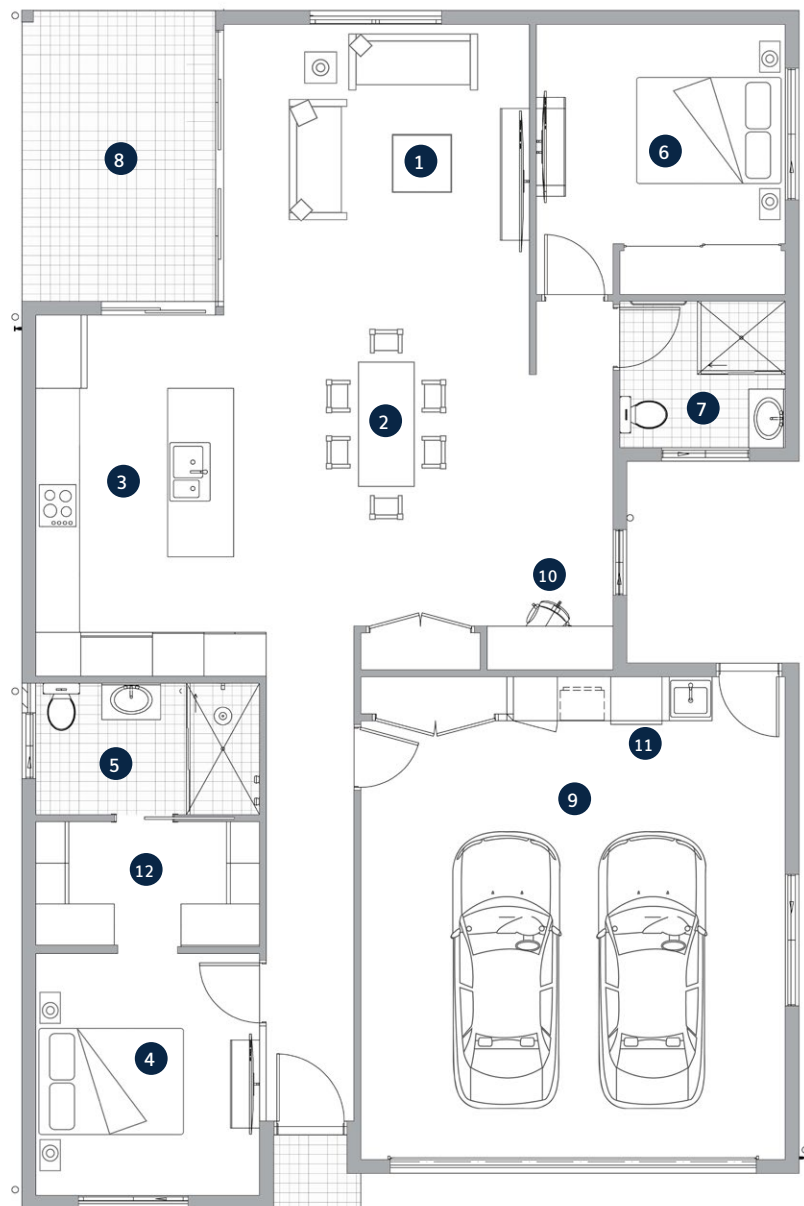
Artist's render - Clubhouse



Artist's render - Pool

Casuarina

- 1 Living
- 2 Dining
- 3 Kitchen
- 4 Bedroom 1
- 5 Ensuite
- 6 Bedroom 2
- 7 Bathroom
- 8 Alfresco
- 9 Double Garage
- 10 Multi-Purpose Room
- 11 Laundry
- 12 Walk-In Robe



| | | | |
|-------------------|-------------|---------------------------|-------------|
| Living | 4.2m x 4.0m | Bedroom 2 | 3.4m x 3.7m |
| Dining | 4.2m x 4.0m | Bathroom | 2.3m x 2.0m |
| Kitchen | 4.9m x 2.6m | Alfresco | 4.0m x 2.6m |
| Bedroom 1 | 3.3m x 3.1m | Double Garage | 6.0m x 5.8m |
| Ensuite | 1.7m x 3.5m | | |
| Walk-In Robe | 1.7m x 2.2m | | |
| Total Area | | 168.2m² | |



*The facade renders and floorplans are provided for illustrative purposes only. It may contain upgraded items/finishes not included as standard. For detailed home pricing, please talk to a sales consultant. All efforts have been made to ensure accuracy of this brochure at time of print.

A new way of living.

HOMETOWN AUSTRALIA
COMMUNITIES